

NJE/IP Bridge FACT SHEET

- ⇒ Do you maintain dual SNA and IP networks to support your mainframe job entry and printing applications?
- ⇒ Do you use an SNA network for the sole purpose of supporting NJE networking?
- ⇒ Do you want to centralize control and management on a single platform using existing mainframe tools?

NJE/IP Bridge allows customers to connect NJE services on z/OS, VSE and TPF systems over an IP network. The NJE/IP Bridge uses native NJE functions on IBM and non-IBM systems to offer both cost savings and functionality enhancements. Companies maintaining an SNA network exclusively for submitting jobs, transferring files, and sending output to open system printers may be able to eliminate the need for SNA networking.

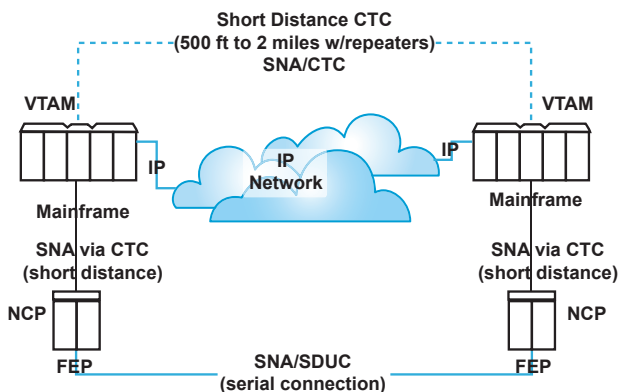


Figure 1: Current NJE over SNA Network

In the past, connecting z/OS, VSE, and TPF systems for output routing and remote job entry required NJE over either direct CTC connection or SNA networks. NJE provides useful support for unattended print and file transfer, while the SNA requirement is expensive and restrictive.

The Offering

- 1) NJE/IP Bridge allowing for direct NJE communications over IP networks
- 2) Enterprise-level software maintenance
- 3) Onsite installation of necessary software (optional)

The NJE/IP Bridge reduces-or even eliminates-the SNA requirement while maintaining NJE functionality by letting NJE traffic flow over IP networks between IBM systems and Solaris, AIX, HP/UX, and Linux systems. They communicate and cooperate better, faster and cheaper, enabling quick deployment of new services and reinforcing the cost-effective nature of NJE networking.

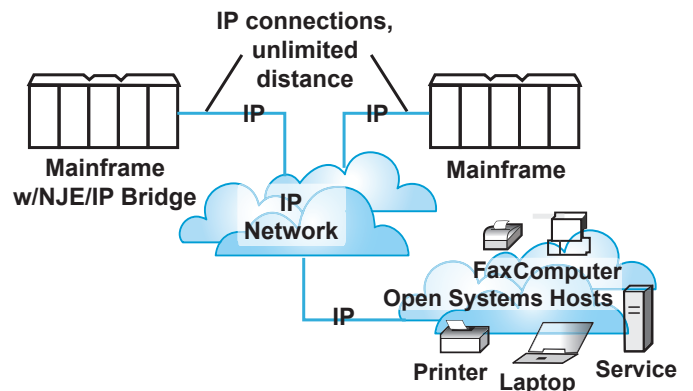


Figure 2: Simplified NJE Network with NJE/IP Bridge

How Does the NJE/IP Bridge Work?

The NJE/IP Bridge is implemented as a software appliance on the participating IBM or open-systems hosts and provides a direct connection between spooling systems and NJE components on each system. Connections to participating systems are established via IP or up to 32 BCTC, CTC, or CNC connections. The NJE/IP Bridge enables both IBM and non-IBM operating systems to use NJE functionality naturally and without user awareness of the IP transport.

NJE/IP Bridge

Legacy NJE			NJE/IP Bridge		
<p>Past solutions for achieving NJE functionality for z/OS required dual networks (SNA and IP), with the SNA network being imperative, at a minimum, for unattended file transfer and remote printing.</p>			<p>With use of the NJE/IP Bridge, only IP networking is required to support NJE functionality natively.</p>		
COST			COST		
<p><i>NJE over SNA is expensive (especially whenever SNA network does nothing but NJE).</i></p>			<p><i>The NJE/IP Bridge reduces the size and the cost of the SNA network. In settings where an SNA network's sole function consists of NJE support, the SNA network may be eliminated.</i></p>		
Hardware	Software	Other	Hardware	Software	Other
<ul style="list-style-type: none"> • 37XX FEPs • 37XX line cards • Larger z/OS system, thus • Larger z/OS license fees • Larger fees for application licenses 	<ul style="list-style-type: none"> • VTAM • NCP • ACP/SSP • Possibly VM license • Full RSCS license 	<ul style="list-style-type: none"> • Dual network infrastructure • Dedicated lines between FEPs • LPAR with standard engines • Skills needed: SNA resource 	<ul style="list-style-type: none"> • No FEPs • No line cards • Smaller z/OS system, thus • Smaller z/OS license fees • Smaller fees for application licenses 	<ul style="list-style-type: none"> • No VTAM • No NCP • No ACP/SSP • No Possibly VM license • No Full RSCS license 	<ul style="list-style-type: none"> • Only one network infrastructure • No Dedicated lines between FEPs • LPAR with IFL only • Skills needed: open systems resource
BRAND			BRAND		
<p><i>NJE over SNA limits purchasing options to IBM, which creates brand dependency regarding product availability, functionality, and pricing.</i></p>			<p><i>The NJE/IP Bridge permits communication with both IBM and popular non-IBM operating systems or appliances, providing the best tool for the job.</i></p>		
			<ul style="list-style-type: none"> • IBM • HP • INTEL 	<ul style="list-style-type: none"> • Solaris • AIX • Unix 	<ul style="list-style-type: none"> • Linux • ... • ...
LIMITATIONS			ENHANCEMENTS		
<p><i>NJE networking presents several physical and logical challenges.</i></p>			<p><i>The NJE/IP Bridge enables functional enhancements to previous capabilities. It leverages the strengths of both the mainframe and the open systems.</i></p>		
<p>The NJE over SNA or CTC continues to limit:</p> <ul style="list-style-type: none"> • Physical distance (a few miles for CTC, or dedicated SDLC links) • Low speed (less than 56kbs avg.) • Closed nature of SNA 			<p>Mainframe systems now can:</p> <ul style="list-style-type: none"> • Print to any network printer • Transfer any type of file or output to open system unattended • Deliver files to programs like mail, PDF, FAX, etc. <p>Open systems now can:</p> <ul style="list-style-type: none"> • Exploit mainframe event management • Use system mainframe management and monitoring • Utilize mainframe output management 		

Benefits of the NJE/IP Bridge

- ⇒ SNA Network no longer required, only IP network infrastructure
- ⇒ Cost reduction in hardware and in various software license and maintenance fees for SNA network software and hardware components
- ⇒ Tight integration with open systems tools
- ⇒ NJE functionality for a wide variety of operating systems beyond IBM products

More Information

We would like to provide you with additional information about our complete solutions at market-leading prices. If you would like to learn more about making NJE/IP Bridge the answer for all your computing infrastructure needs, please call (407) 323-4773, or email us at bsisales@bsiopti.com.



806 Silk Oak Terrace
 Lake Mary, FL 32746
 (407) 323-4773
 (407) 323-4775 Fax
www.bsiopti.com